

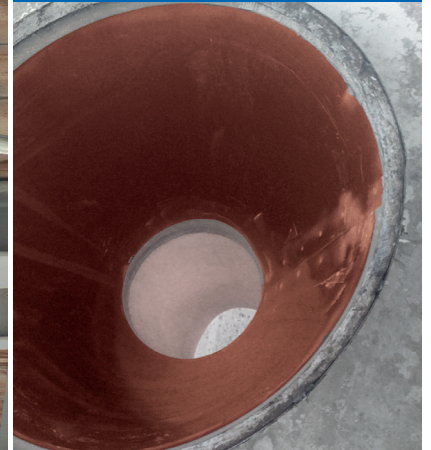
CONEFLEX®

# Concrete discharge

funnel with early warning system



HAWIFLEX®



*Loading ready-mix concrete trucks and discharging mixes is often carried on by means of a filling or discharge funnel, amongst other alternatives, in ready-mix and precast facilities. For funnels, there are a great number of different linings – provoking the question as to what method would appear to be the most reasonable in any individual case. The special Coneflex® funnel is the latest development from habermann materials for the area of concrete technology. The idea behind it is an early warning system, which now also gives unmistakable visual pointers as to when the operator must take action.*

Alongside its operations manufacturing highly wear-resistant mixer replacement parts for concrete mixers, habermann materials is also engaged in finding possibilities of using its Hawiflex® material for reducing wear in concrete production facilities. The company has been supplying diverse versions of funnel linings since the beginning of the 1950s. The advanced development of this lining is based on progressive product engineering. habermann materials has also focused on factors relevant to economic viability and suggestions made by responsible

employees. Essentially, funnel linings should meet following the requirements:

- ease of cleaning (its design generates a freely oscillating effect to shake off the concrete)
- suited to preventive maintenance (wear monitoring signals its replacement time)
- simple assembly (possible with just a few bolts)
- prolonged service life (the very good wear-reducing properties of Hawiflex®)
- avoidance of repair work and downtimes

Batching takes place into the infeed funnel before the mixing sequence in the concrete mixer. Depending on the order, the concrete's composition can be with coarse, fine, sharp-edged or around particles. Inshort, we are dealing with extremely abrasive bulk solids.

After the actual mixing process in the concrete mixer, the mixer is evacuated via a slide opening. The prepared concrete mix now arrives at the discharge funnel. In this area, too, optimisation measures as regards wear and caking are always a challenge. Hawiflex® funnels are flexible insets manufactured individually. They can be inserted into existing sheet metal funnels

Special Coneflex® funnel from habermann materials.



## Quick and easy cleaning.

- • • and/or in funnels made up of a framework. They are fastened with bolts, which makes it easy to carry out this work on site.

### Dual colour system

The special Coneflex® funnel and the idea of an early warning system behind it is the latest development from habermann materials for the area of concrete technology. The dual colour system allows a plant operator to see immediately when action must be taken. The Coneflex®'s inner 8mm layer is white. The 2mm outer layer is red. So it is clearly visible when the white layer is worn out and the funnel inset has to be replaced or turned around.

The innovative Hawiflex® material exhibits outstanding non-stick behaviour in respect of fresh concrete. Residual concrete can be easily washed away with a water hose. The washing water is recirculated into the recycling process; the system represents state-of-the-art technology and is environmentally friendly.

### The turnable all-rounder doubles service time.

Every professional in a ready-mix concrete production facility is acquainted with the problem of neglected cleaning at the end of a day. A laborious cleaning process, mostly carried out with a hammer, then has to be undertaken with sheet metal funnels without an elastic lining. It is quite obvious that this type of work does not exactly improve the plant's state but that does not stop it from happening all too often in practice. Cleaning a funnel inset made from Hawiflex® is easy in such cases due to its elastic material, since the soft underground offers no place for any residual concrete to adhere. This latest funnel material is resistant to formwork release oils. This was one of the objectives set in development, as it is quite common to treat plant components with release agent at the end of a shift in order to minimise residual concrete adhesion. Both rubber and simple polyurethane substances are not resistant to oils and can be eliminated as possible materials.

### Special Coneflex® funnel.

Concrete mix ejection from the mixer into the discharge funnel is partially offset. Accordingly, wear only occurs in a partial area of the funnel inset. The Coneflex® funnel's simple assembly enables it to be turned as least once and quite often twice. Its service life can be doubled or even tripled in this way.

As has been pointed out above, there are a great number of different linings. Concrete production facilities, which do business with an eye both to the budget and longer term, can profit from the advantages of lining insets made from Hawiflex® and, in particular, the special Coneflex® funnel.